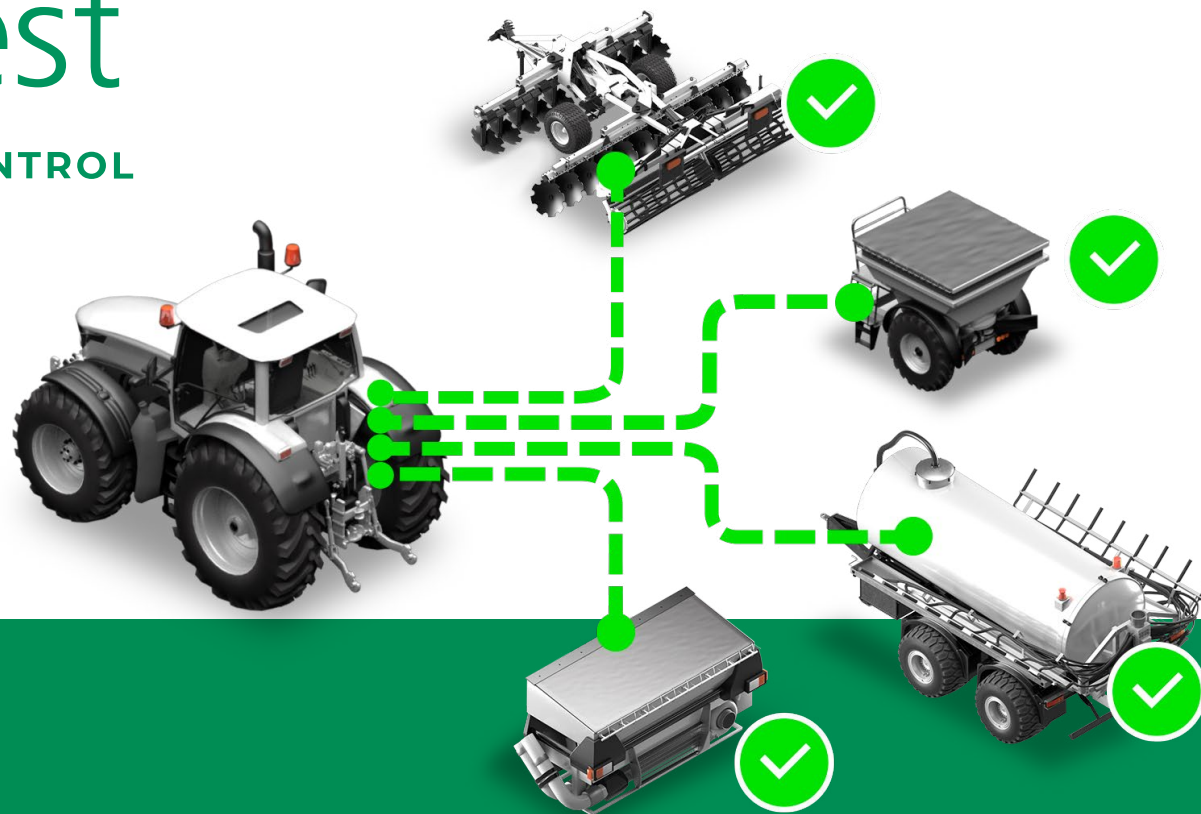


# ●jaltest

ISOBUS CONTROL

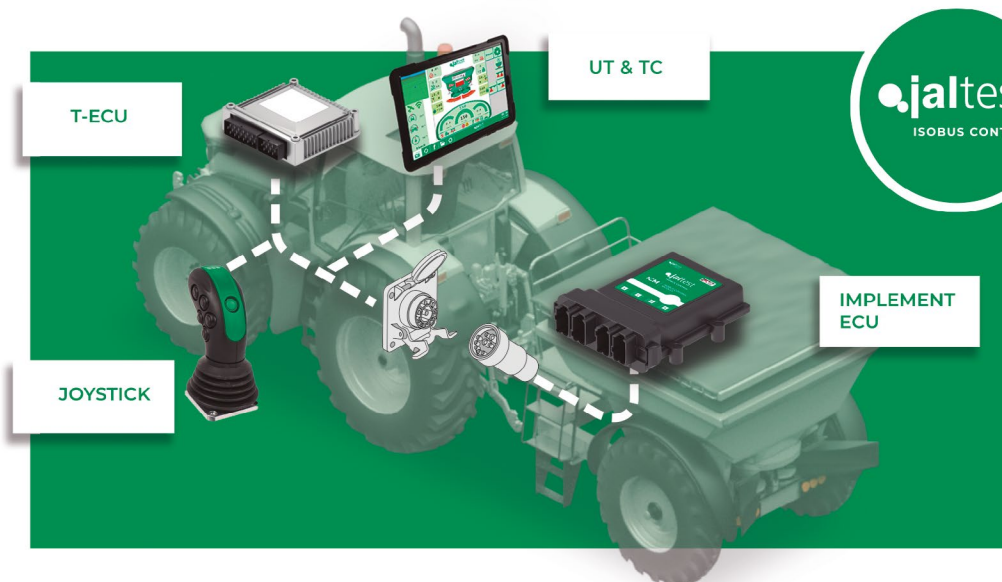




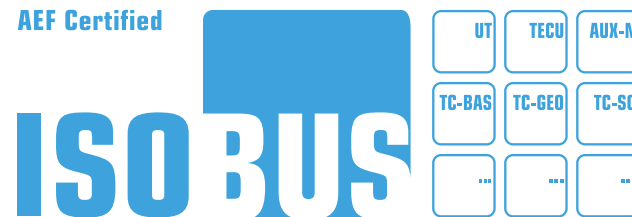


## ISOBUS

**ISOBUS** is a standard technology created by the main manufacturers of agricultural equipment that ensures compatibility between tractors and agricultural implements of different manufacturers, enabling the data exchange by means of a universal language and a single operator terminal for all agricultural implements in the tractor cab.



AEF Certified



[www.aef-isobus-database.org](http://www.aef-isobus-database.org)





## JALTEST ISOBUS CONTROL

**Jaltest Isobus Control** defines a new concept in Agriculture 4.0. that improves any current situation by using all the information offered by agricultural equipment through a single standardised communication protocol (ISO 11783).

**Jaltest Isobus Control** offers solutions for the digitalisation of all types of agricultural equipment, ensuring compatibility between agricultural implements and tractors regardless of the manufacturer. The purpose is to achieve the maximum performance of agricultural equipment in order to manage successfully and easily a productive and efficient business, adapted to new technologies and environmental demands.



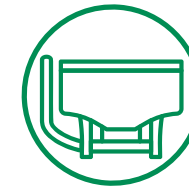


## APPLICATIONS

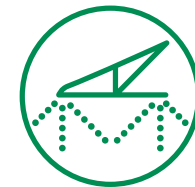
- ✓ Configurable system and adapted to the needs of each agricultural equipment.
- ✓ A single and functional operator terminal to control all its agricultural implements.
- ✓ Complete control of the agricultural tasks with detailed reports.
- ✓ Saving inputs, times and machines.
- ✓ Access to all data remotely in real-time.
- ✓ More efficient decision-making and environmentally-friendly decisions.



FERTILISATION



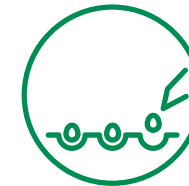
FRONT HOPPER



SPRAYING



SLURRY TANKS



SOWING



TRAILER



MOWING



TEDDING



TILLAGE

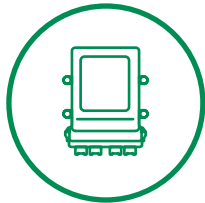


BALING



AND MORE...

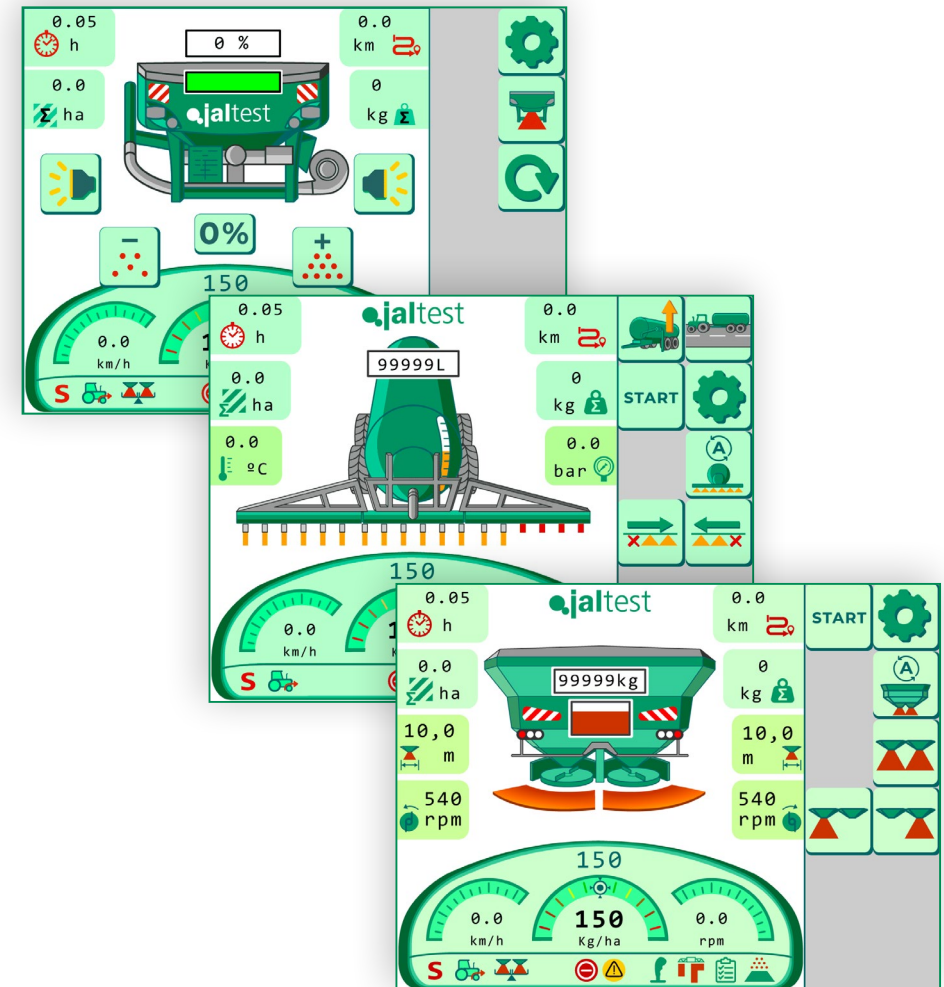




## JALTEST ICM

**Jaltest ICM** is the electronic control unit for agricultural equipment based on ISOBUS technology. This control unit allows you to perform the following:

- Monitoring and managing different sensors applicable to each type of agricultural implements, with the aim of optimising all types of agricultural tasks.
- Managing the hydraulic and electrical system of agricultural implements, as well as their application system.
- Having a single terminal in the tractor to work with any agricultural equipment.
- Controlling sections, avoiding overlaps and improving the product use.
- Automatic control of prescriptions during agricultural tasks.
- Managing the maintenance tasks for the machines.
- Saving inputs, times and machines.
- Adapting the equipment and agricultural implements to the environmental requirements.





## JALTEST ISOBUS DIAGNOSTICS

**Jaltest ISOBUS Diagnostics** enables the agricultural equipment manufacturers to carry out different adjustments in the Jaltest ICM control unit installed in the agricultural equipment, facilitating the End-Of-Line processes of manufacturers and repairs.

- Diagnostics and error clearance of the implement.
- System measurement reading.
- Actuators on control elements.
- Maintenance and warranty module.
- Component calibration.
- Parameter modification.
- Control unit update.

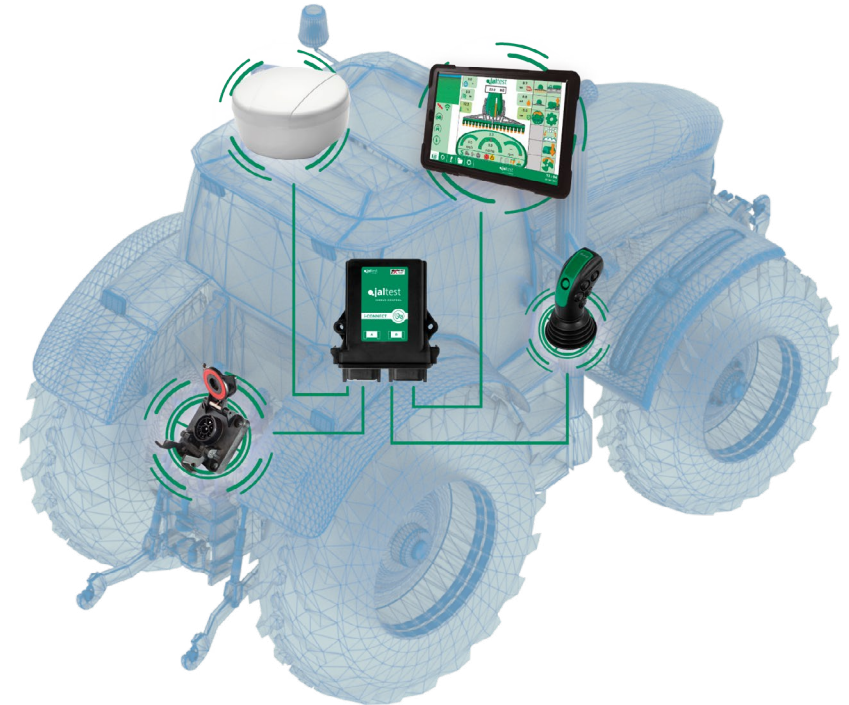




## JALTEST i-CONNECT

**Jaltest i-Connect** is the solution that allows tractors and self-propelled equipment, that do not have factory ISOBUS technology, to use any ISOBUS agricultural implement and benefit from all the advantages that this technology offers, such as:

- A single operator terminal for all agricultural implements regardless of the manufacturer.
- Collection of reports of agricultural tasks.
- Cost optimisation.
- Parallel and precise driving of the vehicle with different guidance modes.
- Easily exchangeable between vehicles.
- Use of wi-fi without the need for wires.







[cojali.com](http://cojali.com)

[jaltest.com/es/jaltest-isobus](http://jaltest.com/es/jaltest-isobus)

[jaltest-telematics.com](http://jaltest-telematics.com)



Cojali S.L. · Avenida de la Industria, 3 · 13610 Campo de Criptana · España

Telephone: +34 926 589 671 >

[isobus@cojali.com](mailto:isobus@cojali.com) >